

PREDICTOR

PACKARDS INTERNATIONAL
MOTOR CAR CLUB

SAN DIEGO REGION

Volume 25

March 1998

Warner Bros. Tour

March 8th

Info on page 4

Your Board



THE PRESIDENT'S MESSAGE

President/Membership/Project Sales

B.J. Hill 619/ 530-1414 (wk)
619/ 530-2123 (fax)
619/ 451-0570 (hm)

Vice President/Tour Coordinator

Charlie Owens 760/ 7548841

Secretary

Ferne Coombs 619/ 486-4579

Treasurer

Mark Rothermich 619/583-2369

National Board Rep.

Fred Perkins 760/966-0190 (wk)
packardcars@internetMCI.com

Technical Representative

Tony Collins 619/451-0669
packards@aol.com

Predictor/Roster/Historian

Linda Owens 760/754-8841
charles@connectnet.com

San Diego Regional Office

619/530-1414(wk)

Hi Gang,

The dues are in for the year and we are 54 strong with 6 more possible to check in. We have 3 new members. Let's keep up the good work. The new 1998 Tour calendar is out and there are some exciting things coming, not to mention the next one on March 8th to Warner Brothers Studio.

Speaking of tours, June is open for YOUR tour. Think of a place you would like to take us, keeping in mind the time of year.

July 12th is the tour to Old Town, to see the 4 musical partners in "Forever Plaid". Tony and I have seen it twice and look forward to going again. We will have guards for the cars and will eat at Casa Guadalajara Restaurant. All reservations must be prepaid. Be watching the Predictor.

NEED YOUR HELP FOR THE BIG 3 SWAP MEET!!! We will have a booth if everyone helps with either getting the booth there or giving 2 hours of time. This is a PR event for us. Call BJ at 530-1414 if you can help.

We have heard from Bruce and Denise Newton. They gave their Packard to the kids in Downey but are looking for another. They have a house in San Diego, so will be back from Oregon time to time.

WE ARE GOING TO THE GETTY MUSEUM but reservations are 1 year away so 1999 Tour is in the bag.....

Keep Packarding,

March 4th

Carrows Restaurant
9152 Mira Mesa Blvd.
Dinner at 6:00pm
Board Members, meeting on
Mar. 10th.

Important Notice!!!!

This is the last issue for the following subscribers. If you have paid your renewal fees, please contact BJ Hill to get it corrected. If not, the cost is now \$48.00. Don't be left out of all the fun!!!

Winona Cataline, Dr. WI Gullette, Rita & Riki Henneberg, Terry Mettam, Chester Owen, Lance "Butch" Parker, Chris Rinker, Carol Yunt

PACKARDS INTERNATIONAL

SAN DIEGO REGION

TOURS 1998

Meeting Date	San Diego Region Event	Bd Meeting	Other Events
January	Membership Meet/Region Pala Mesa Country Club January 18	27	
February 4	National Membership Meet January 30-Feb 1		
	BIG 3 SWAP MEET February 28-Mar 1		
March 4	WARNER BROS STUDIO Mar 8 Joint Tour So Cal/SD Region	10	
Apr 1	Chris Craft Wooden Boat Restoration Temecula Winery and Antique Tour Apr 13		
May 6	HERLIHY FLOWER FARMS May 17 Fallbrook Picnic / Barbyque TL BJ Hill	19	
	FALLBROOK CAR SHOW May 24		
June 3			
	ANNUAL PARTS EXCHANGE So Cal Region Cypress HS June 14		
July 1	"AN AFTERNOON AT THE THEATRE" FOREVER PLAID Mexican Fiesta Old Town July 12 TL BJ Hill	14	
August 5	GARAGE TOUR		
September 2	GRAND SALON/So Cal Region Fashion Island Newport Beach Sept 12-13	8	
October 7	NATIONAL TOUR Arizona Region October 26-31		AACA Hershey Swap Oct 8-11
November	HOLIDAY PARTY November 14		
December	HAPPY HOLIDAY		
PACKARD CENTENNIAL	July 5-10 1999 Warren, Ohio		

4

MODEL 645-H STEWART-WARNER ELECTRIC WINDSHIELD WIPER SERVICE INSTRUCTIONS

Model 645-H Windshield Wiper is standard equipment on all 1941 Packard Clippers.

This wiper is similar in construction and operation to the 645-E wiper with the following changes:

1. The 104102 coil, shaft and contact assembly and 104088 clutch have been eliminated. The contacts are now a part of the drive housing assembly.
2. The drive gear ratio on this wiper is 70-1.
3. The 104104 motor has been replaced by 450006 motor which is smaller than previous models.

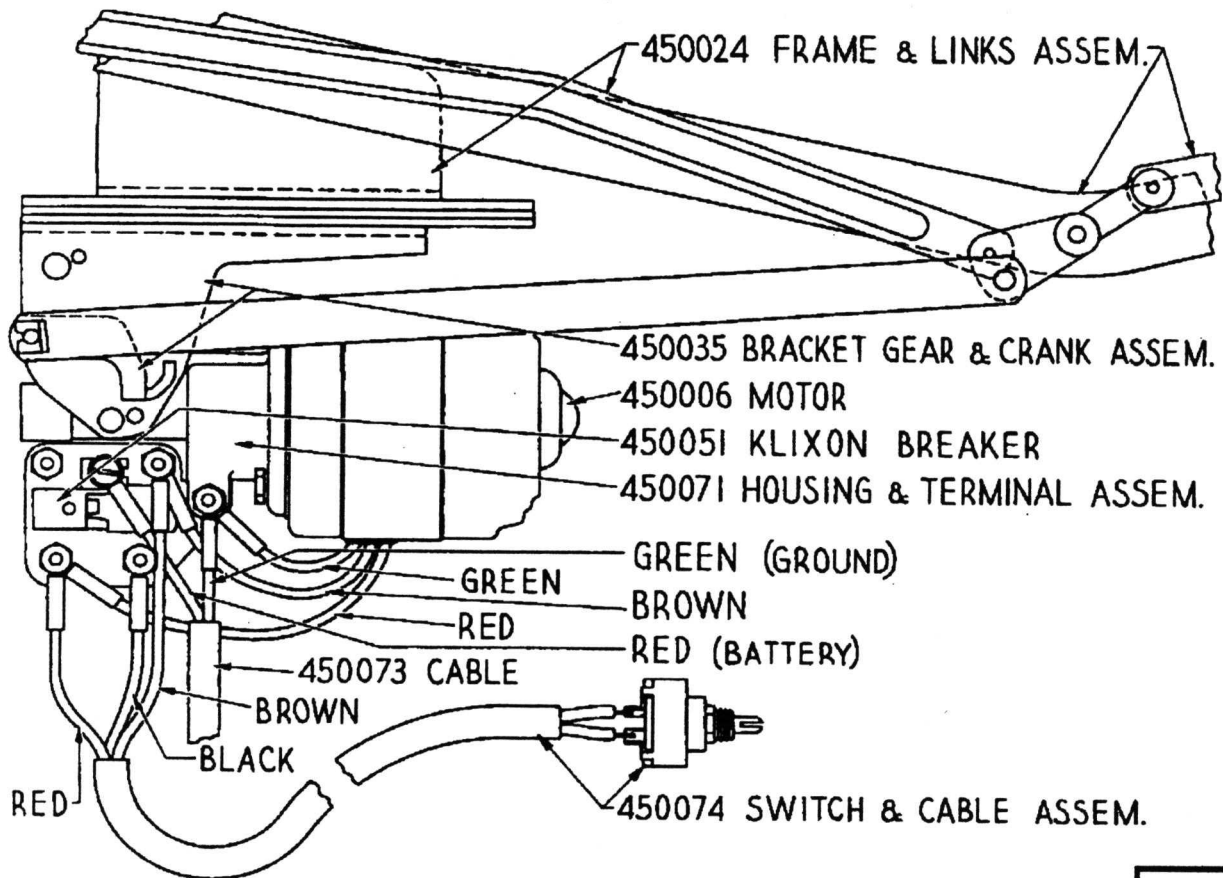
4. The 450024 frame and link assembly is longer than that used on the earlier series wipers.

The basic parts which will require service or replacement are as follows:

450006 Motor
450051 Klixon Breaker
450062 Switch
450075 Resistor

For instructions as to how to repair or replace these parts, see Form 18-12-BX, Model 645-E Windshield Wiper Service Instructions.

For breakdown of service parts, see Form 18-12-CI, Book III Parts List.



Detail Drawing of Model 645-H

STEWART-WARNER CORPORATION, 1826 DIVERSEY PARKWAY, CHICAGO, ILLINOIS, U.S.A.

PRINTED IN U.S.A.

FORM 18-12-CO

REMINDER:
Windshield
wiper blades
available San
Diego Region,
just call BJ
Hill at office;
619/530-1414

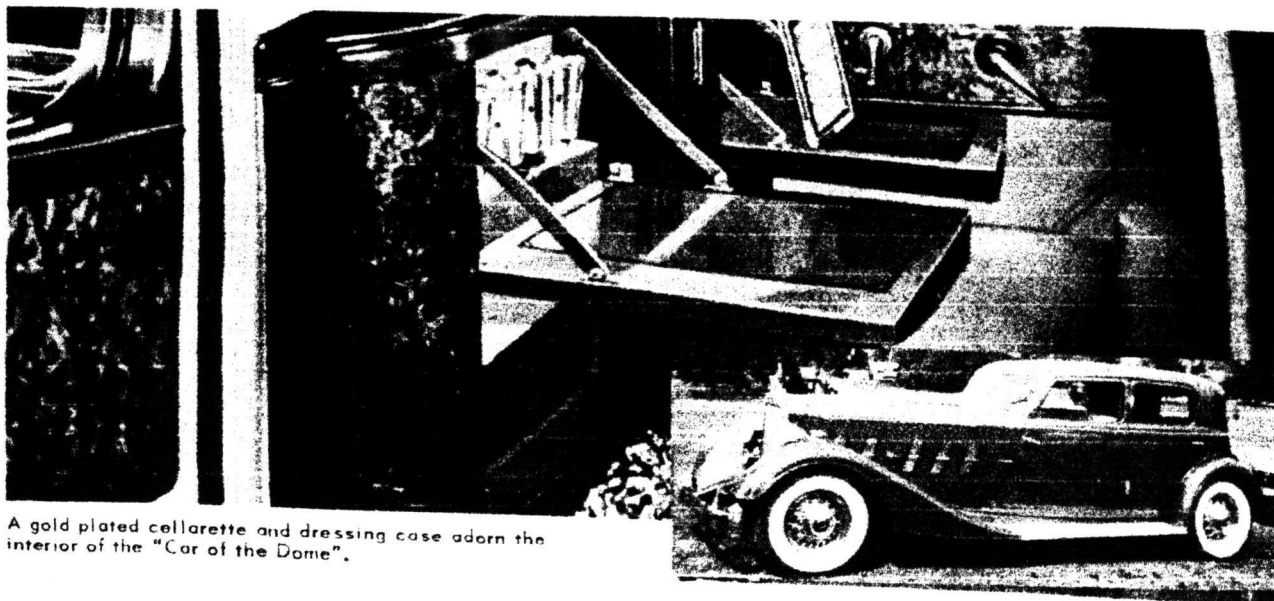
HAPPY DAYS ARE HERE AGAIN CLOUDY SKIES ARE BLUE AGAIN

1933 - Roosevelt's New Deal was gaining momentum. Congress was backing him up with an extraordinary array of new legislative measures. They ran the gamut from abandoning the gold standard to the National Recovery Act which was administered by General (Old Ironpants) Johnson who had become the personification of Recovery. The Blue Eagle appeared everywhere. There were NRA parades and every theater had a short with the double feature telling how America was marching on to prosperity under the slogan "We do our part". The economic tide began to turn.

Fiorello LaGuardia, "The Little Flower", was elected Mayor of New York City. Thomas E. Dewey, who was a mere 31, was appointed the local Federal Attorney. Roosevelt and his wife took a cruise up the New England coast to Campobello in the little "Amberjack II".

DON'T BLAME ME FOR FALLING IN LOVE WITH YOU I'M UNDER YOUR SPELL, HOW CAN I HELP IT DON'T BLAME ME

In Chicago, the World's Fair opened and drew tremendous crowds despite the economic situation. At the Travel and Transportation Building, the Packard exhibit was the sensation of the Fair. People waited in line for two hours to see the "Car of the Dome" which carried off every automotive prize at the Fair. It was a \$12,000 Packard V-12 Sport Sedan by Dietrich. It was painted golden metallic bronze with chrome wire wheels. Its interior hardware from door handle to accelerator pedal was gold plated. The upholstery was beige English



A gold plated cellarette and dressing case adorn the interior of the "Car of the Dome".

The following article was taken from the Classic Car Quarterly, winter issue, 1958. Written by Bob Turnquist, this is part 1, part 2 will continue in the April issue.

broadcloth with a sheared beaver rear rug. The wood trim and bar was made of burlled Carpathian elm. When the bar was opened, it contained four goblets, two glasses and a glass mirror with gold corner clips.

THEY ASKED ME HOW I KNEW MY TRUE LOVE WAS TRUE . . . SMOKE GETS IN YOUR EYES

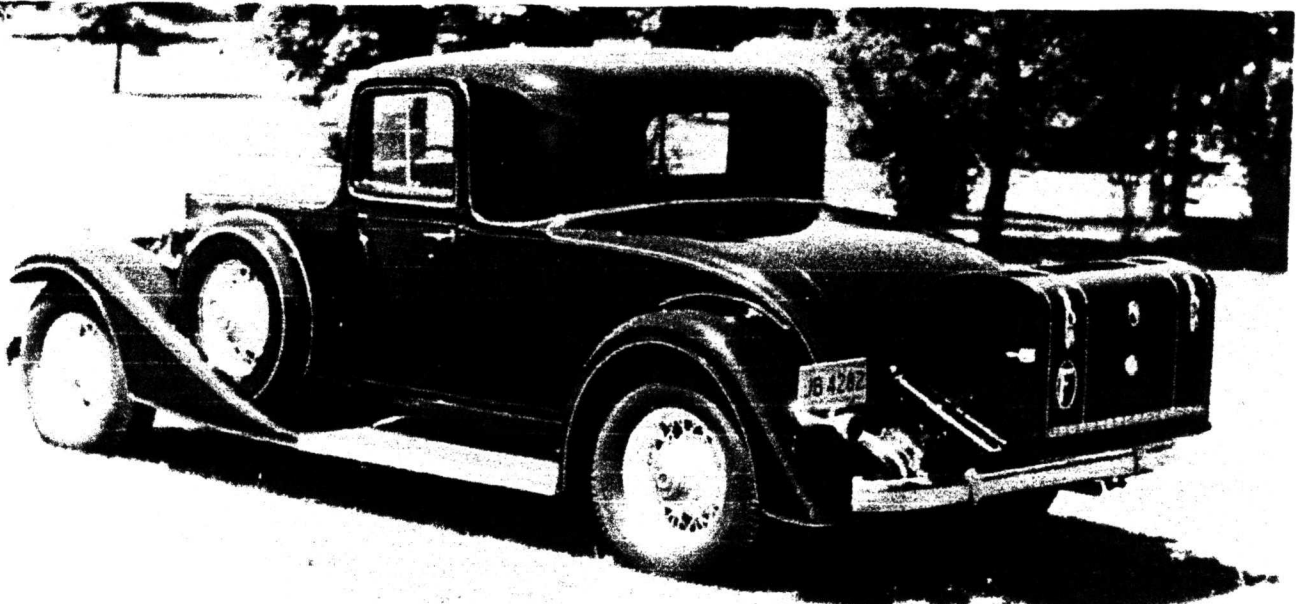
On January 30, 1933 people tuned in WXYZ Detroit to hear the first episode of the Lone Ranger. If you liked the movies, there was Katherine Hepburn in "Little Women", Mae West in "I'm No Angel" and Walt Disney's "Three Little Pigs". Shirley Temple was taking her first steps up the stairway of fame.

"Anthony Adverse" topped the best sellers for fiction and "Life Begins at Forty" by Walter B. Pitkin took top honors on the non-fiction list.

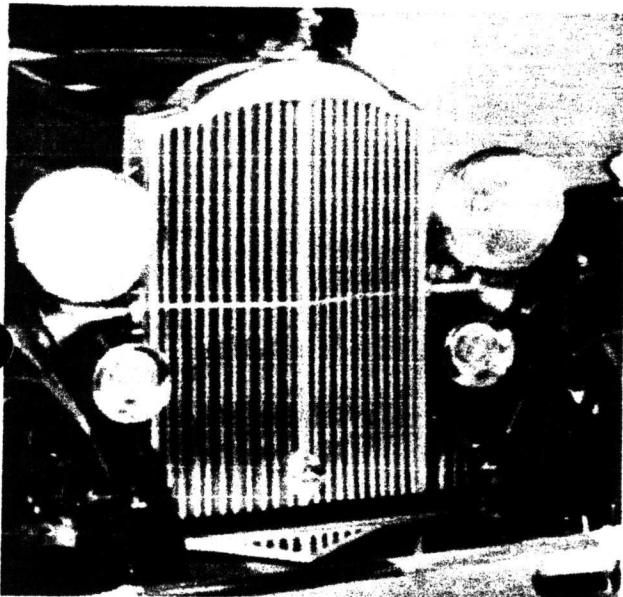
In sports, Max Baer knocked out Schmeling in the tenth, and the massive Primo Carnera knocked out champion Jack Sharkey in the sixth. Glenn Cunningham began running the mile and breaking every record.

For those that liked to gamble, the punch board and jar game made their appearance.

General Balbo's armada of Italian flying boats flew from Italy to Chicago and Sally Rand wowed them at the Fair.



1002 Coupe \$2,350 at Detroit. Note introduction of skirted fenders and no draft windows. Trunk was a \$90 accessory.



The Eight (front view). Note flat lensed headlights. Stoneshield was a \$30 accessory.

HOLD ME, HONEY WON'T YOU HOLD ME . . .

In the world of fine classics, Packard still reigned as "King of them all". It was the personification of simplicity, grace and dignity; the world's most beautiful and desired motor car. Packard continued to have more automobiles registered in the world than any other luxury car. In Europe, Packard had won almost every important Concours D'Elegance including first prize three years in succession at Monte Carlo. In America, it had won top honors for 1933 at the Century of Progress. Bentley had come in second.

The luxurious Tenth Series came in three de-

Series - Tenth	Bore & Stroke - 3-3/16 x 5
Name - Eight	H.P.A.M.A - 32.5
Produced - 1/5/33 to 8/21/33	Brake - 120 at 3200 RPM
Cars Produced - 5120	Motor # - 370,000 to 373,999
Models - 1001-2	Vech. # - Body type plus body no.

model number	Body Type style	passenger capacity	shipping weight	factory list & date effective	
model 1001 (127 1/2" w.b.)				1-5-33	2-9-33
602	coupe sedan	5	4245	\$	2190
603	sedan	5	4335		2150
608	coupe	2-4	4200		2160
609	coupe roadster	2-4	4150		2250
model 1002 (134" w.b.)					
610	touring	5-7	4275		2390
611	phaeton	5	4270		2370
613	sedan	5	4590		2385
614	sedan	7	4640		2455
615	limousine	5-7	4725		2550
616	sedan club	5	4545		2390
617	coupe	5	4500		2440
618	coupe	2-4	4455		2350
623	sedan convert.	5	4515		2890
627	convert.victoria	5	4540		2780
5633	sedan formal	5	4900		3085

licious flavors. Eight, Super Eight and Twelve. They were a trio packed with power. The Super 8 and 12 would accelerate from 5 to 30 in 8 1/2 seconds in high gear. The 8 took 10 seconds. In addition, they were packed with many new goodies. They had power brakes complete with a four position power selector on the instrument panel. If you wanted full power brakes with an exceptionally light pedal pressure, selector position No. 1 was for you. Position No. 2 had a power application approximately 75% of position No. 1. Position No. 3, 50% of position No. 1 and No. 4, 25% of position of No. 1.

PREDICTOR

PACKARDS INTERNATIONAL
MOTOR CAR CLUB
SAN DIEGO REGION
9030 Carroll Way #1
San Diego, CA. 92121

3/98

ADDRESS CORRECTION REQUESTED



COLIN D. FORT, AEP, CSOP, CTEA
Regional Vice President

First American Trust Company

2100 FIFTH AVENUE • SAN DIEGO, CA 92101
(619) 515-3410 • FAX (619) 615-4964 • cfort@firstam.com

Reproduction Parts *Used Parts*
1935-1942 1935-1942

Packard Parts

JUNIOR MODELS & SENIOR
EST. 1978

WALLACE WALMSLEY
(619) 283-3063

4732 BANCROFT ST. #7
SAN DIEGO, CA 92116

**FOR SALE: 1947 Custom Super 8
5 Passenger Sedan, Loaded!
Asking \$16,000.00 Contact
Frank Stoppela 208/336-1020**

**WANTED: 1954 "359" cu. in. straight
eight engine and 1954 Caribbean
wheelwell chrome moldings, front
& rear.
Contact Pat McGill 760/360-0725**

**FOR SALE: 56 Ultramatic electric shift trans-
mission (less torque converter). Includes shift
motor, harness, relays & push button assembly,
\$175.00**

Tony Collins has perfected his technique to
repair cracked manifolds. If you are having
a problem or need to ask a question, give
him a call at: 619/ 451-0669